

## 电磁方向阀 Solenoid on/off Valves

# SV10-22 单向常闭电磁阀

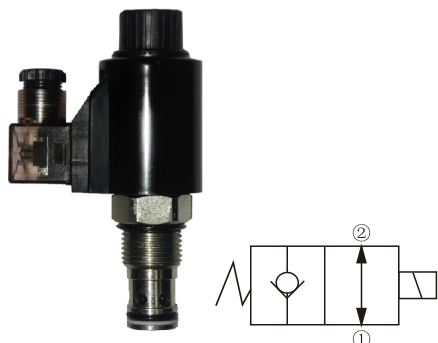
Rev, Normally Closed

### 订购型号 Order Type

SV10-22-①

①线圈电压：直流电压 (V) 12, 24

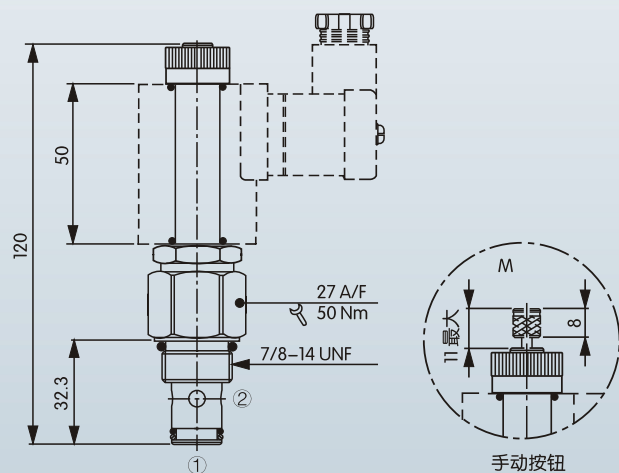
交流电压 (V) 110, 220



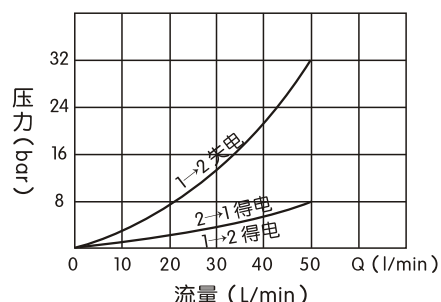
### 特性 Features

- 断电时，用作单向阀，液压油从①流向②，同时②到①关闭；通电时，②到①开启。此模式容许双向流动。
- 用于控制流量 40 L/min 及压力达 250bar 之开启与关闭，典型应用控制液压系统之传动装置。
- 额定流量：40 L/min      最大压力：250bar。
- 液压油自②至①泄漏：在210bar以及油粘稠度为46cSt时是0.10 ml/min (2滴)。
- 工作温度：
  - 最低-30℃，最高100℃，使用标准型BUNA衬垫。

### 尺寸图 Dimensions

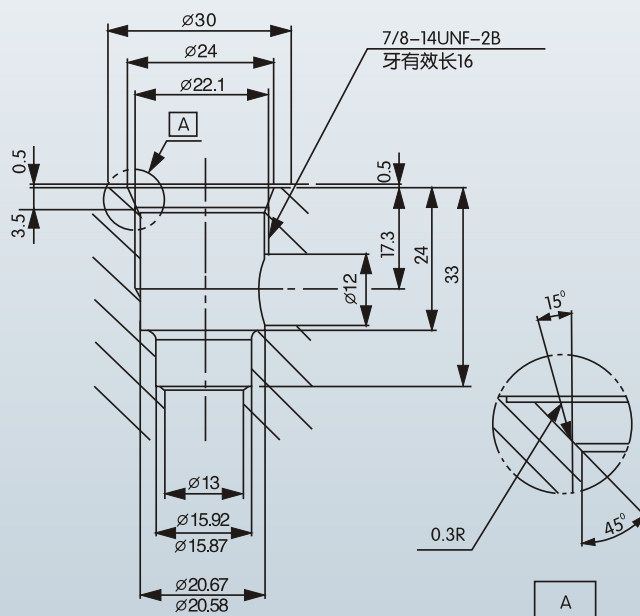


### 流量曲线 Performance (Cartridge Only)



- When de-energized, the valve acts as a check valve, allowing flow from ① to ②, while blocking flow from ② to ①. When energized, the cartridge's poppet lifts to open the ② to ① flow path. In this mode, bidirectional flow is allowed.
- Valve open and close under the controlled flow of 40 L / min and pressures up to 250bar, a typical application of Hydraulic system gear.
- Operating flow rate: 40 L / min    Operating Pressure: 250bar.
- Hydraulic oil leak from ② to ①: In the 210bar and oil viscosity for 46cSt when 0.10 ml / min (2 drops).
- Temperature:
  - 30 °C to 100 °C, with standard BUNA seals.

### 阀孔尺寸 VC102



未注公差：± 0.05