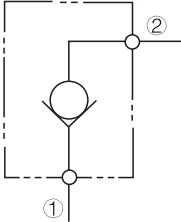
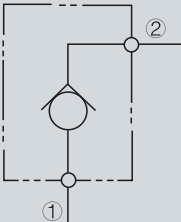
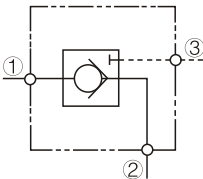
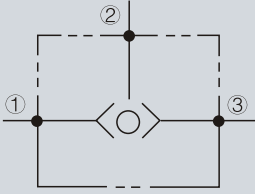


## 方向控制阀目录

名称 Description	液压符号 Symbol	产品型号 Type	最大流量 (L/Min) Flow Rate	插孔形式 Cavity	页码 Page
单向阀 Check		CV08-20	25	VC082	1
		CV10-20	45	VC102	2
		CV12-20	80	VC122	3
		CV16-20	150	VC162	4
		CV20-20	250	VC202	5
		CV25-20	400	VC252	6
逆流单向阀 Reverse Check		CV08-21	15	VC082	7
		CV06-21	25	VC062	8
		CV09-21	45	VC092	9
液控单向阀 Pilot operated		PC06-30	40	VC063	10
		PC09-30	80	VC093	11
		PCT11-A0	40	VCT11A	12
		PCT2-A0	70	VCT2A	13
		PCT17-A0	240	VCT17A	14
梭阀 Load Shuttle		LS06-30	20	VC063	15
		LST11-A0	20	VCT11A	16

注：逆流单向阀最大压力为28Mpa，其类型他均为35Mpa。

### 选购规格 Order Type:

CV08-20-A-N

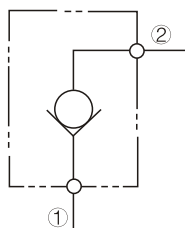
- 油封: N标准型 V氟橡胶
- 开启压力: A B C
- 插孔型号: VC082

# CV08-20 单向阀 Check Valve

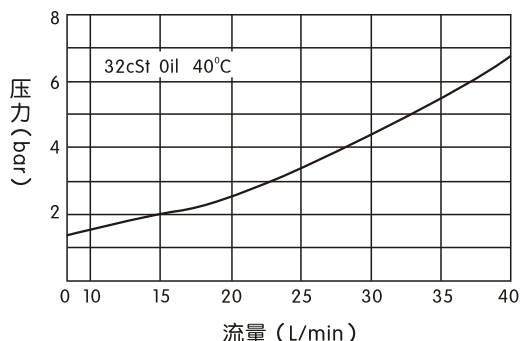
## 订购型号 Order Type

CV08-20-①-②

- ① 开启压力
  - A: 0.2 bar
  - B: 2 bar
  - C: 4 bar
- ② 油封
  - N: 标准型
  - V: 氟橡胶



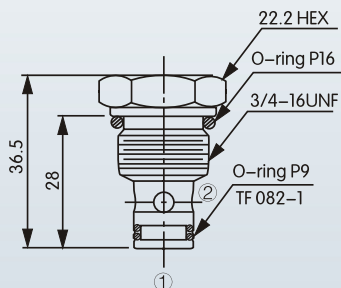
## 流量曲线 Performance (Cartridge Only)



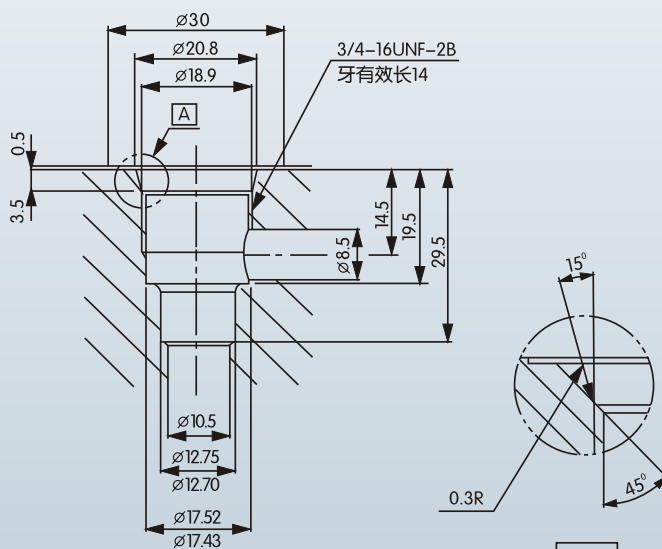
## 特性 Features

- 油流方向由阀口①→阀口②。
  - 该阀的体积小，通流量大、低内泄。
  - 油液的清洁度为NAS11级，需要25um或更精密的过滤器。
  - 最大流量：25 L/min                      最大压力：35MPa。
  - 工作油温：-20~80℃。
- The direction of oil flow from ① to ②, while normally blocking oil flow in the opposite direction.
  - Compact size, large-pass flow, low leakage.
  - Oil NAS11 level of cleanliness for the need to 25um or more sophisticated filters.
  - Maximum Operating flow rate: 25 L / min  
Maxium pressure: 35mpa.
  - Working oil temperature -20 ~ 80 °C.

## 尺寸图 Dimensions

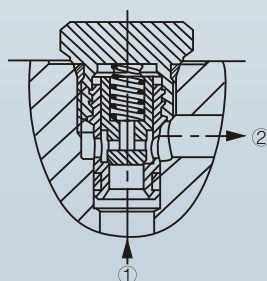


## 阀孔尺寸 VC082



未注公差：± 0.05

## 安装图 Assembly



# CV10-20 单向阀 Check Valve

## 订购型号 Order Type

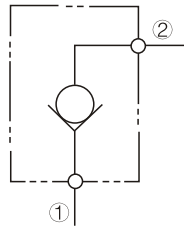
CV10-20-①-②

①开启压力

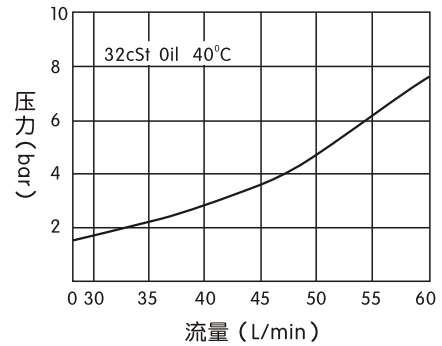
- A: 0.2 bar
- B: 2 bar
- C: 4 bar

②油封

- N: 标准型
- V: 氟橡胶



## 流量曲线 Performance (Cartridge Only)

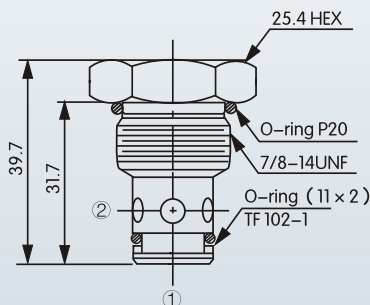


## 特性 Features

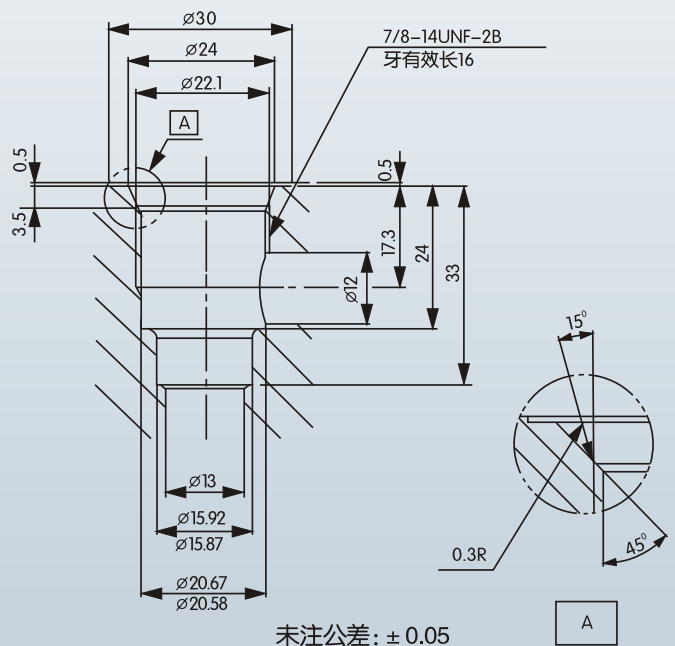
- 油流方向由阀口①→阀口②。
- 该阀的体积小，通流量大、低内泄。
- 油液的清洁度为NAS11级，需要25um或更精密的过滤器。
- 最大流量：45 L/min                      最大压力：35MPa。
- 工作油温：-20~80℃。

- The direction of oil flow from ① to ②, while normally blocking oil flow in the opposite direction.
- Compact size, large-pass flow, low leakage.
- Oil NAS11 level of cleanliness for the need to 25um or more sophisticated filters.
- Maximum Operating flow rate: 45 L / min  
Maxium pressure: 35mpa.
- Working oil temperature -20 ~ 80 °C.

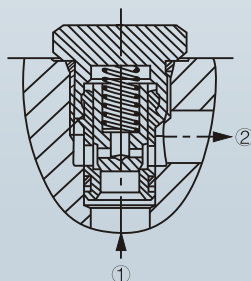
## 尺寸图 Dimensions



## 阀孔尺寸 VC102



## 安装图 Assembly



# CV12-20 单向阀 Check Valve

## 订购型号 Order Type

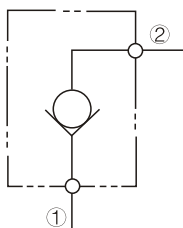
CV12-20-①-②

① 开启压力

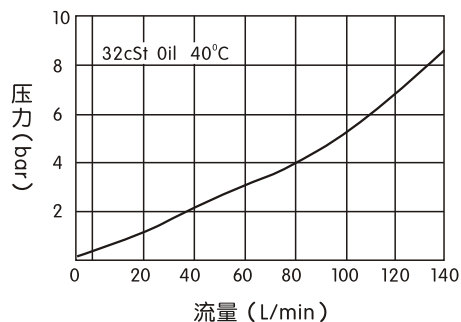
- A: 0.2 bar
- B: 2 bar
- C: 4 bar

② 油封

- N: 标准型
- V: 氟橡胶



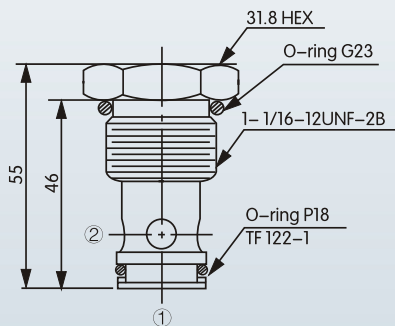
## 流量曲线 Performance (Cartridge Only)



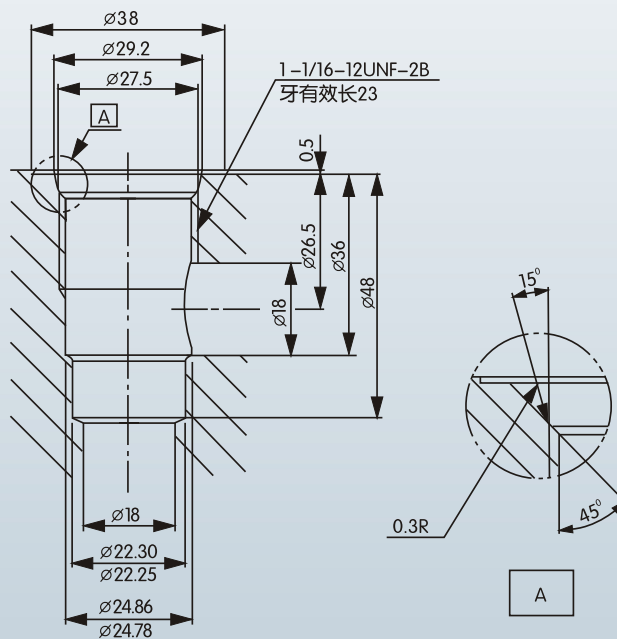
## 特性 Features

- 油流方向由阀口①→阀口②。
  - 该阀的体积小，通流量大、低内泄。
  - 油液的清洁度为NAS11级，需要25um或更精密的过滤器。
  - 最大流量：80 L/min                      最大压力：35MPa。
  - 工作油温：-20~80℃。
- The direction of oil flow from ① to ②, while normally blocking oil flow in the opposite direction.
  - Compact size, large-pass flow, low leakage.
  - Oil NAS11 level of cleanliness for the need to 25um or more sophisticated filters.
  - Maximum Operating flow rate: 80 L / min  
Maxium pressure: 35mpa.
  - Working oil temperature -20 ~ 80 °C.

## 尺寸图 Dimensions

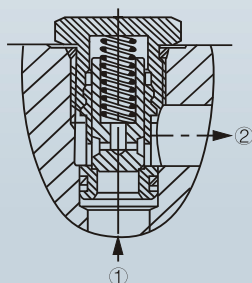


## 阀孔尺寸 VC122



未注公差：± 0.05

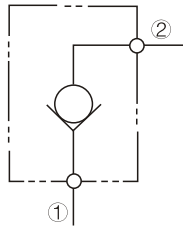
## 安装图 Assembly



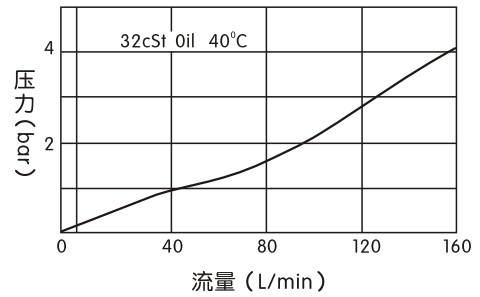
订购型号 Order Type

CV16-20-①-②

- ① 开启压力
  - A: 0.2 bar
  - B: 2 bar
  - C: 4 bar
- ② 油封
  - N: 标准型
  - V: 氟橡胶



流量曲线 Performance (Cartridge Only)

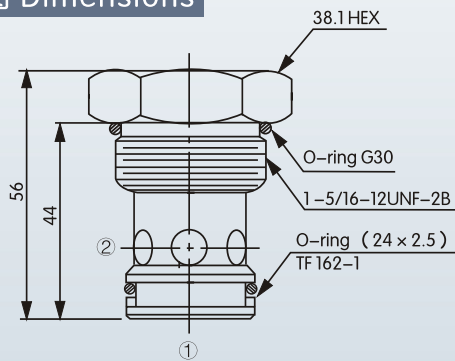


特性 Features

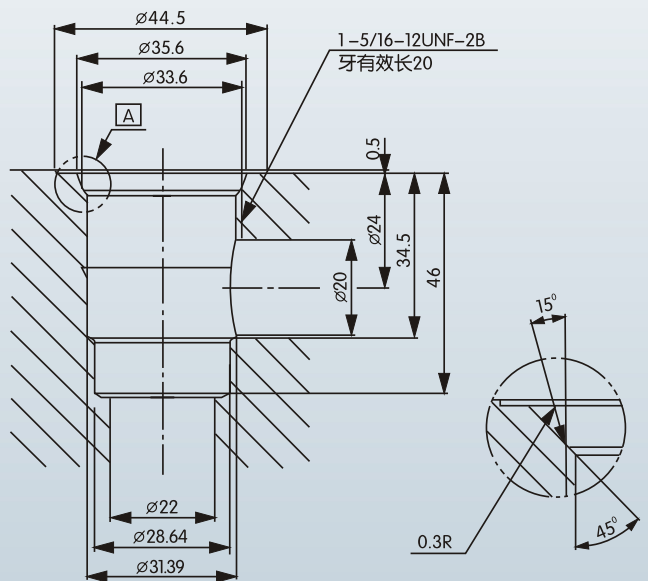
- 油流方向由阀口①→阀口②。
- 该阀的体积小，通流量大、低内泄。
- 油液的清洁度为NAS11级，需要25um或更精密的过滤器。
- 最大流量：150 L/min      最大压力：35MPa。
- 工作油温：-20~80℃。

- The direction of oil flow from ① to ②, while normally blocking oil flow in the opposite direction.
- Compact size, large-pass flow, low leakage.
- Oil NAS11 level of cleanliness for the need to 25um or more sophisticated filters.
- Maximum Operating flow rate: 150 L / min  
Maxium pressure: 35mpa.
- Working oil temperature -20 ~ 80 °C.

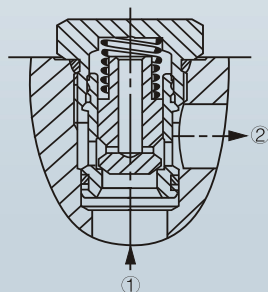
尺寸图 Dimensions



阀孔尺寸 VC162



安装图 Assembly



未注公差: ±0.05

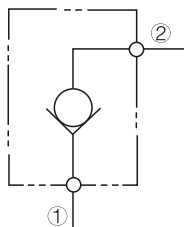
# 方向控制阀 Directional Valves

## CV20-20 单向阀 Check Valve

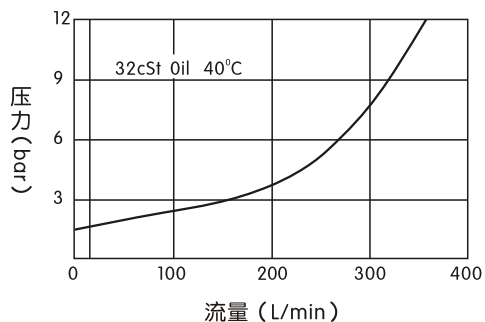
### 订购型号 Order Type

CV20-20-①-②

- ① 开启压力
  - A: 0.2 bar
  - B: 2 bar
  - C: 4 bar
- ② 油封
  - N: 标准型
  - V: 氟橡胶



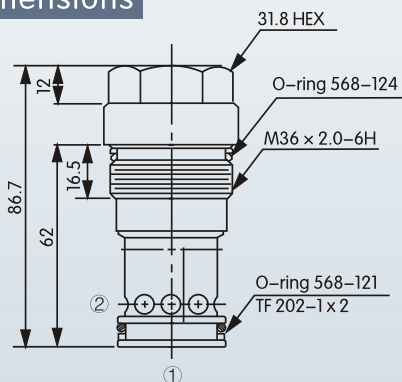
### 流量曲线 Performance (Cartridge Only)



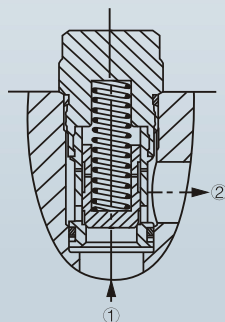
### 特性 Features

- 油流方向由阀口①→阀口②。
  - 该阀的体积小，通流量大、低内泄。
  - 油液的清洁度为NAS11级，需要25um或更精密的过滤器。
  - 最大流量：250 L/min      最大压力：35MPa。
  - 工作油温：-20~80℃。
- The direction of oil flow from ① to ②, while normally blocking oil flow in the opposite direction.
  - Compact size, large-pass flow, low leakage.
  - Oil NAS11 level of cleanliness for the need to 25um or more sophisticated filters.
  - Maximum Operating flow rate: 250 L / min  
Maxium pressure: 35mpa.
  - Working oil temperature -20 ~ 80 °C.

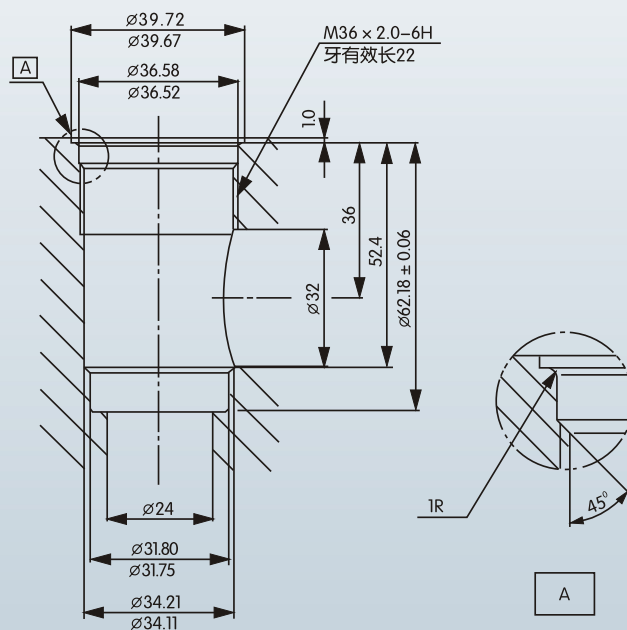
### 尺寸图 Dimensions



### 安装图 Assembly



### 阀孔尺寸 VC202



未注公差: ± 0.05

# CV25-20 单向阀 Check Valve

## 订购型号 Order Type

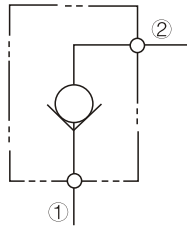
CV25-20-①-②

① 开启压力

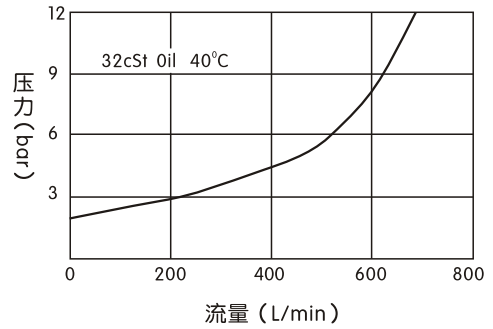
- A: 0.2 bar
- B: 2 bar
- C: 4 bar

② 油封

- N: 标准型
- V: 氟橡胶



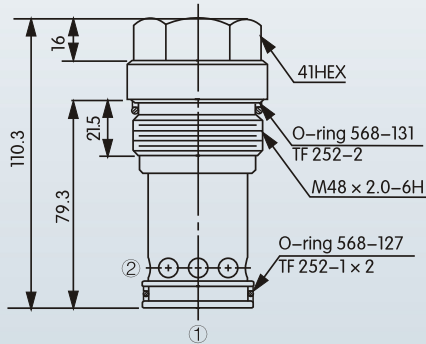
## 流量曲线 Performance (Cartridge Only)



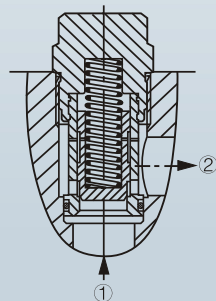
## 特性 Features

- 油流方向由阀口①→阀口②。
  - 该阀的体积小，通流量大、低内泄。
  - 油液的清洁度为NAS11级，需要25um或更精密的过滤器。
  - 最大流量：400 L/min      最大压力：35MPa。
  - 工作油温：-20~80℃。
- The direction of oil flow from ① to ②, while normally blocking oil flow in the opposite direction.
  - Compact size, large-pass flow, low leakage.
  - Oil NAS11 level of cleanliness for the need to 25um or more sophisticated filters.
  - Maximum Operating flow rate: 400 L / min  
Maxium pressure: 35mpa.
  - Working oil temperature -20 ~ 80 °C.

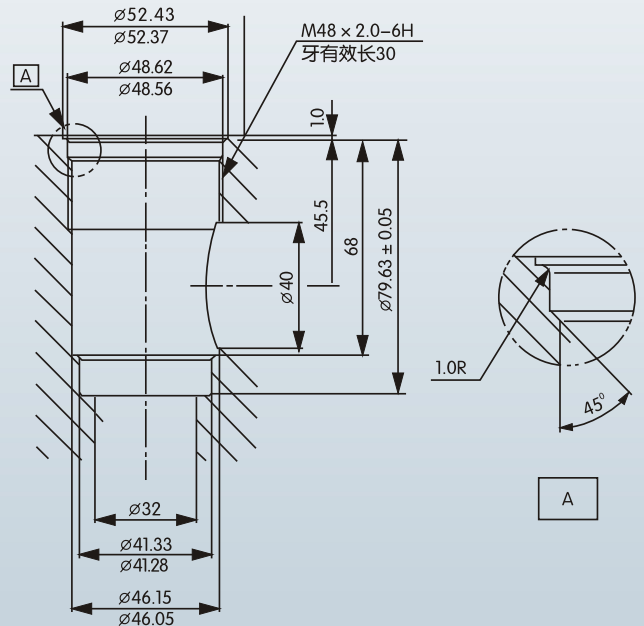
## 尺寸图 Dimensions



## 安装图 Assembly



## 阀孔尺寸 VC252



未注公差: ± 0.05